

1.1

1.2

1.3

1.4

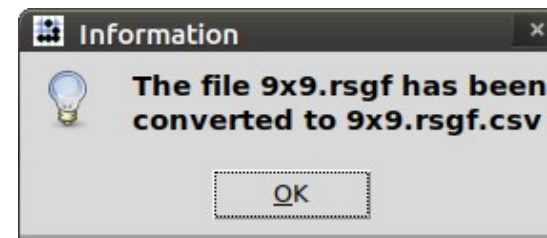
1.5

1.6

1.9

1.7

1.8



2.1

2.2

2.3

2.4

2.5

2.6

2.7

2.8

2.9

2.10

2.11

**GoReviewPartner**

Bot to use for analysis:

Select variation to be analysed

Select moves to be analysed

☒ Analyse all 283 moves

☐ Analyse only those moves:

Select colors to be analysed

☒ Black & white

☐ Black only (LizzieBot)

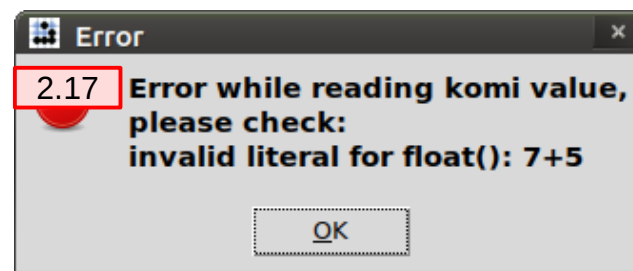
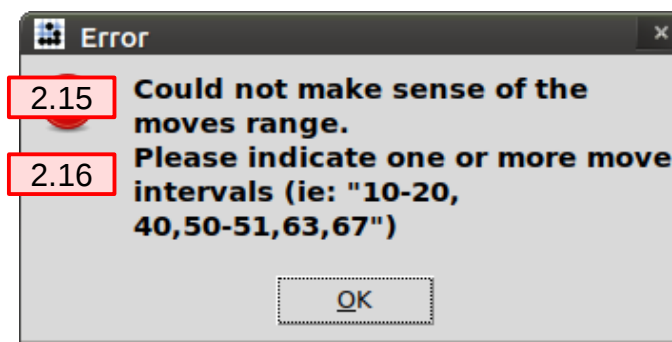
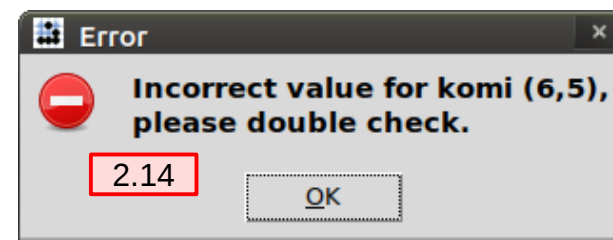
☐ White only (Haylee)

Confirm the value of komi

Stop the analysis if the bot resigns ☐

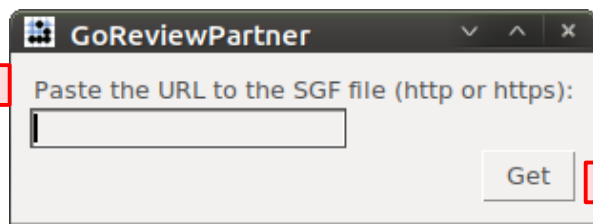
2.12

2.13



*This one happens when the value recorded in the SGF is wrong*

3.1

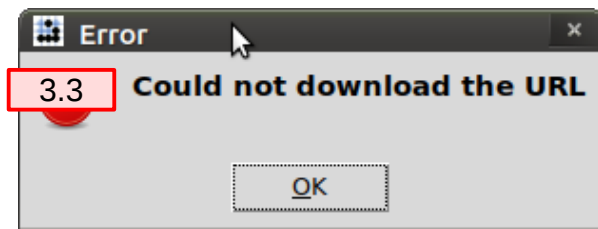


GoReviewPartner

Paste the URL to the SGF file (http or https):

Get

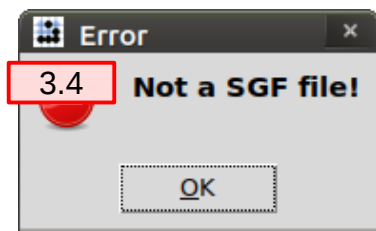
3.2



Error

3.3 **Could not download the URL**

OK



Error

3.4 **Not a SGF file!**

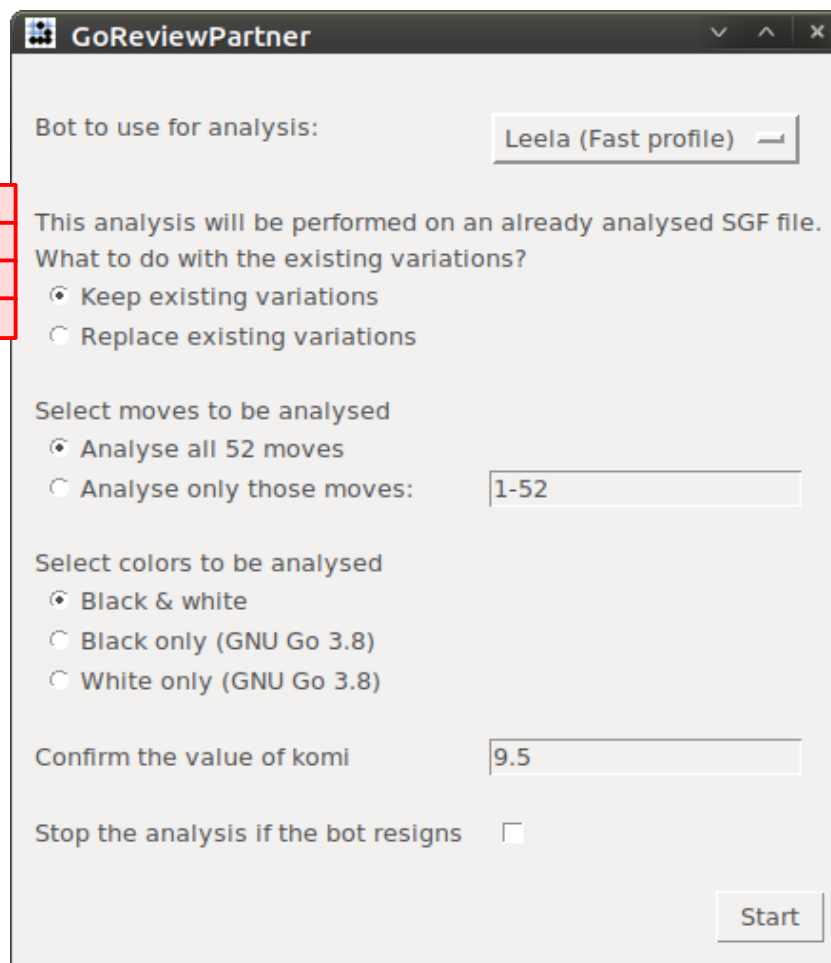
OK

3.5

3.6

3.7

3.8



GoReviewPartner

Bot to use for analysis:

This analysis will be performed on an already analysed SGF file.

What to do with the existing variations?

- ☒ Keep existing variations
- ☐ Replace existing variations

Select moves to be analysed

- ☒ Analyse all 52 moves
- ☐ Analyse only those moves:

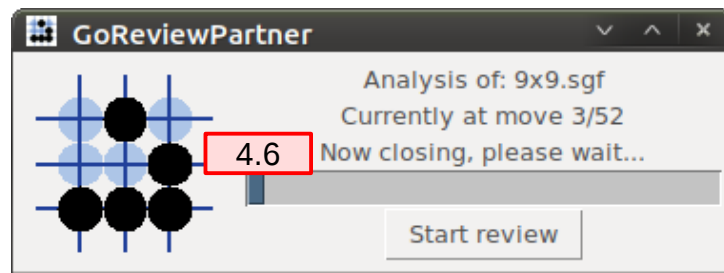
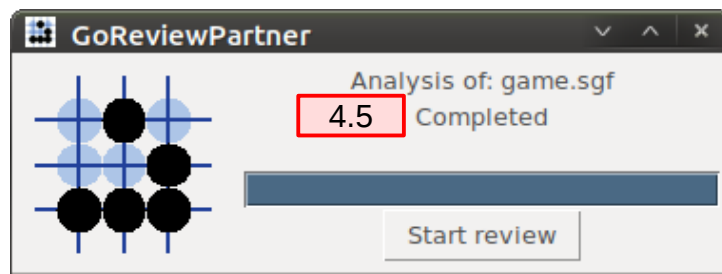
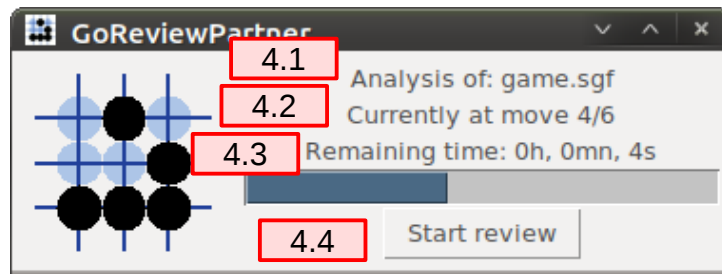
Select colors to be analysed

- ☒ Black & white
- ☐ Black only (GNU Go 3.8)
- ☐ White only (GNU Go 3.8)

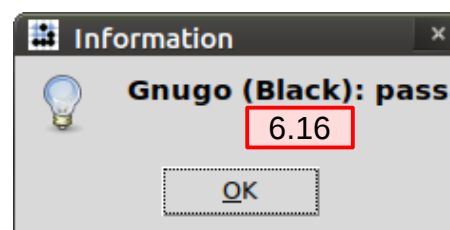
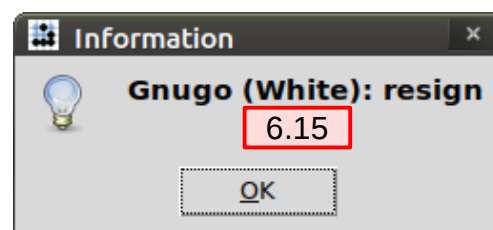
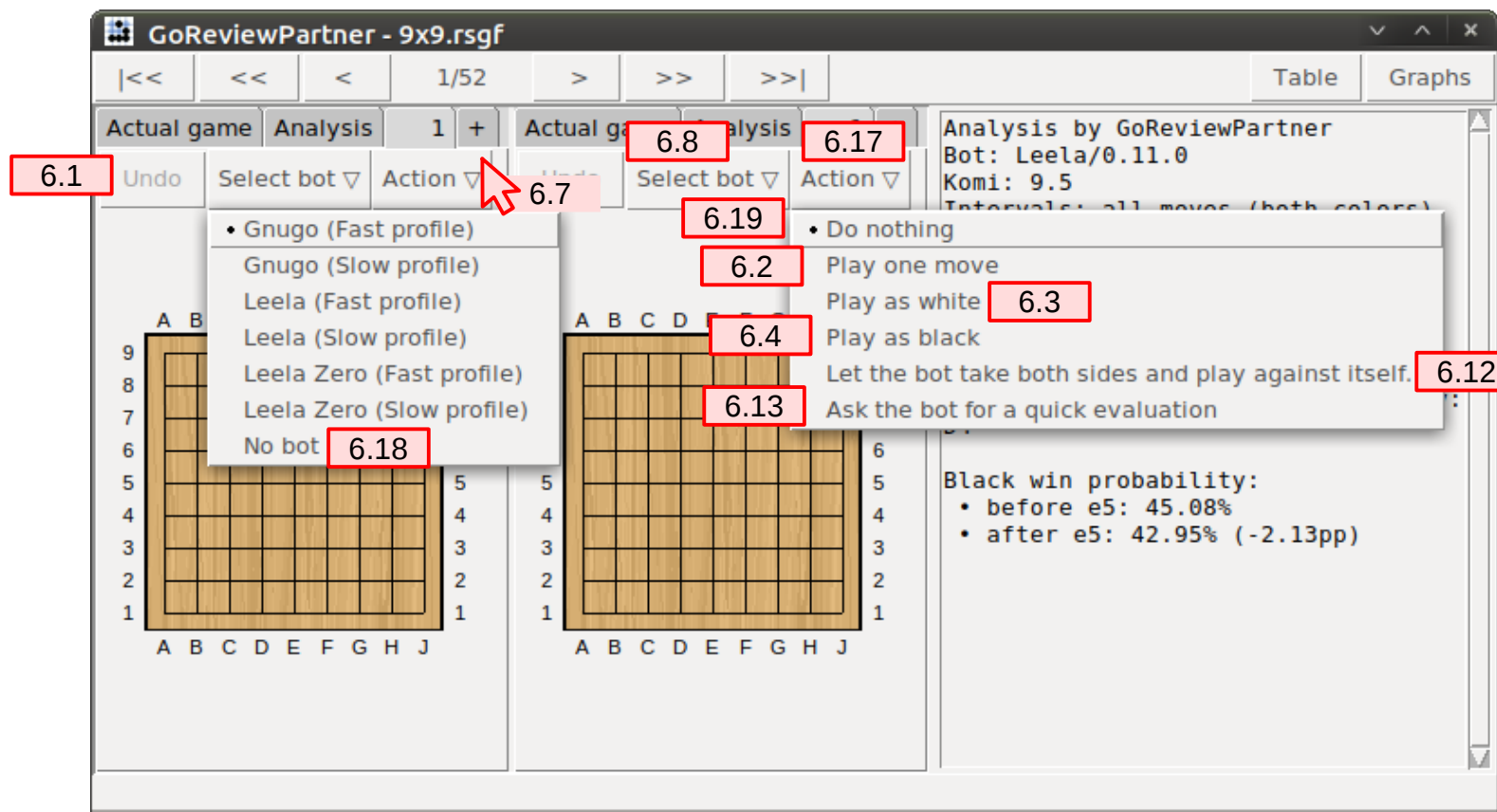
Confirm the value of komi

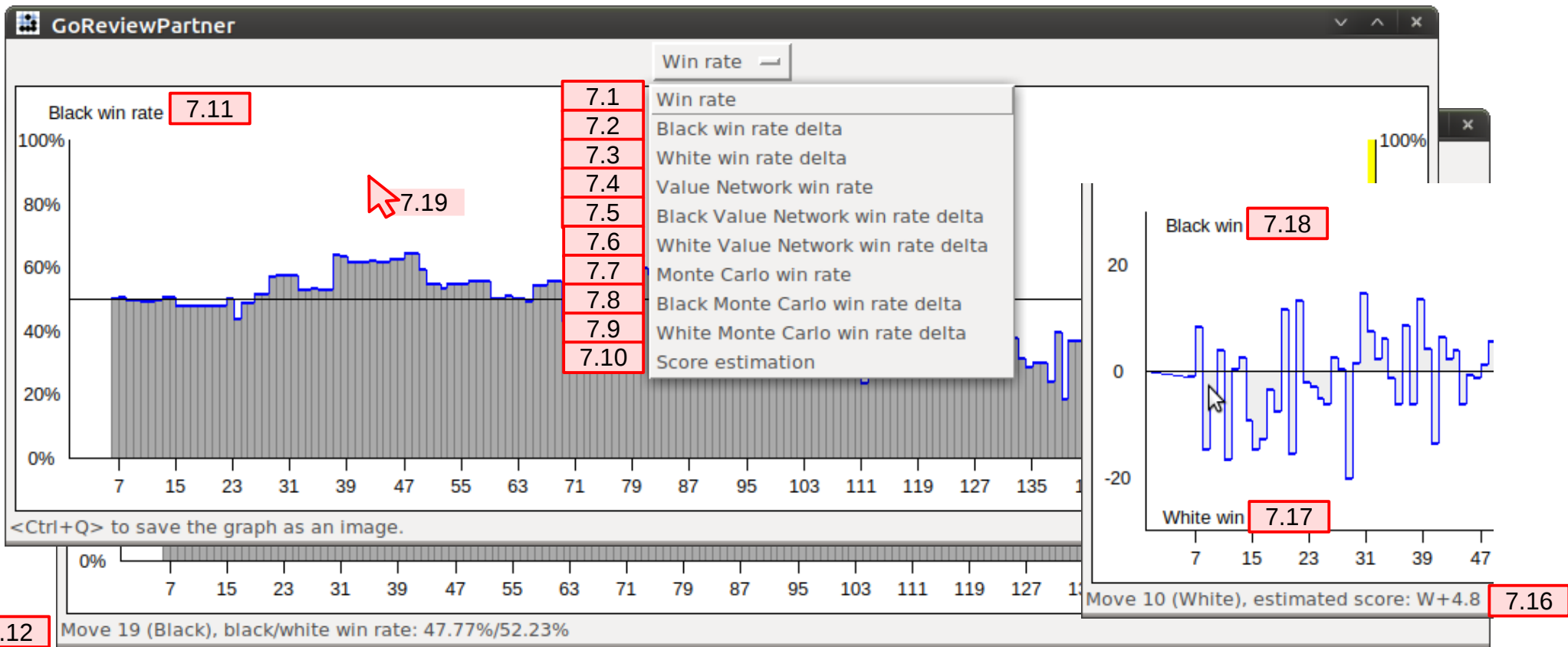
Stop the analysis if the bot resigns ☐

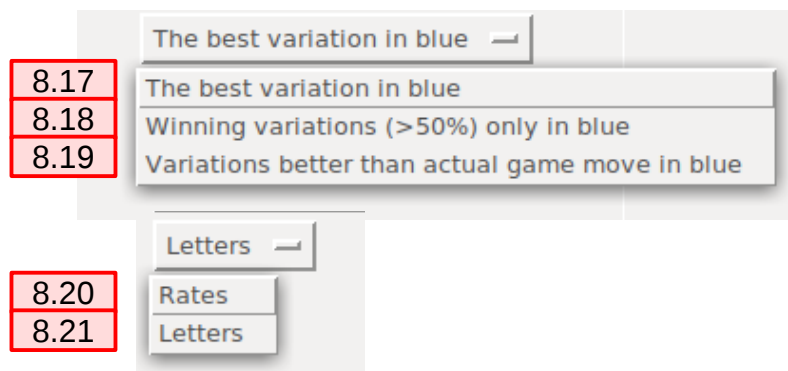
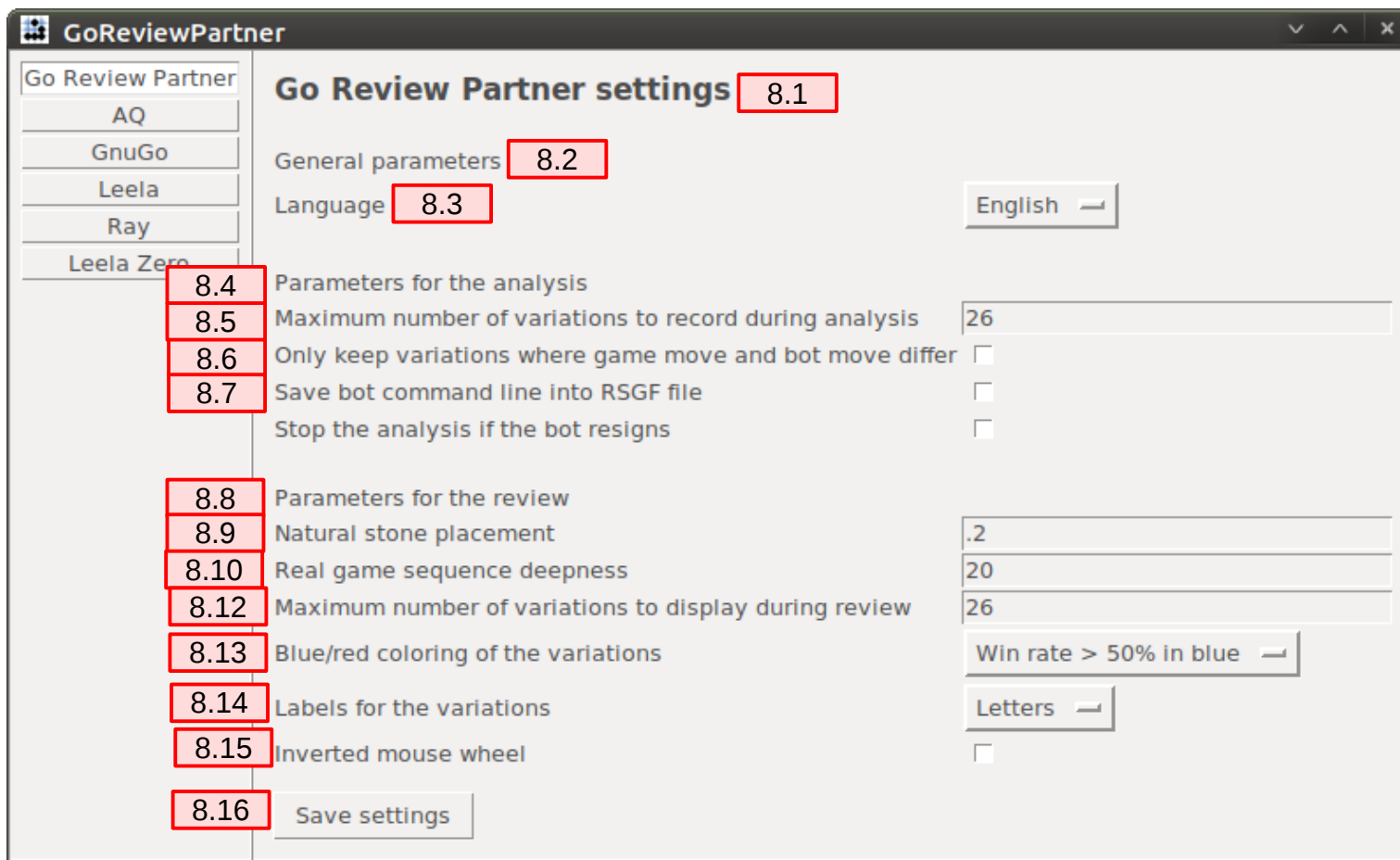
Start



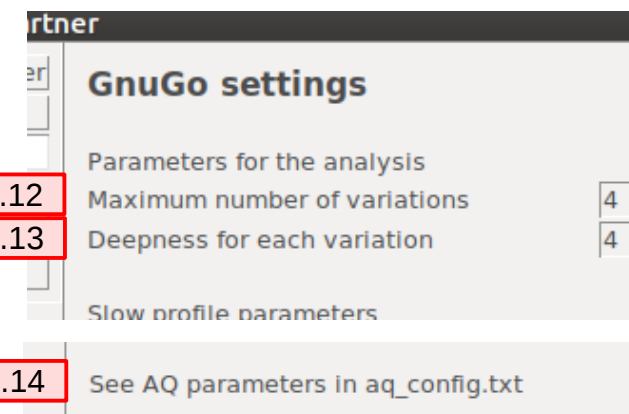
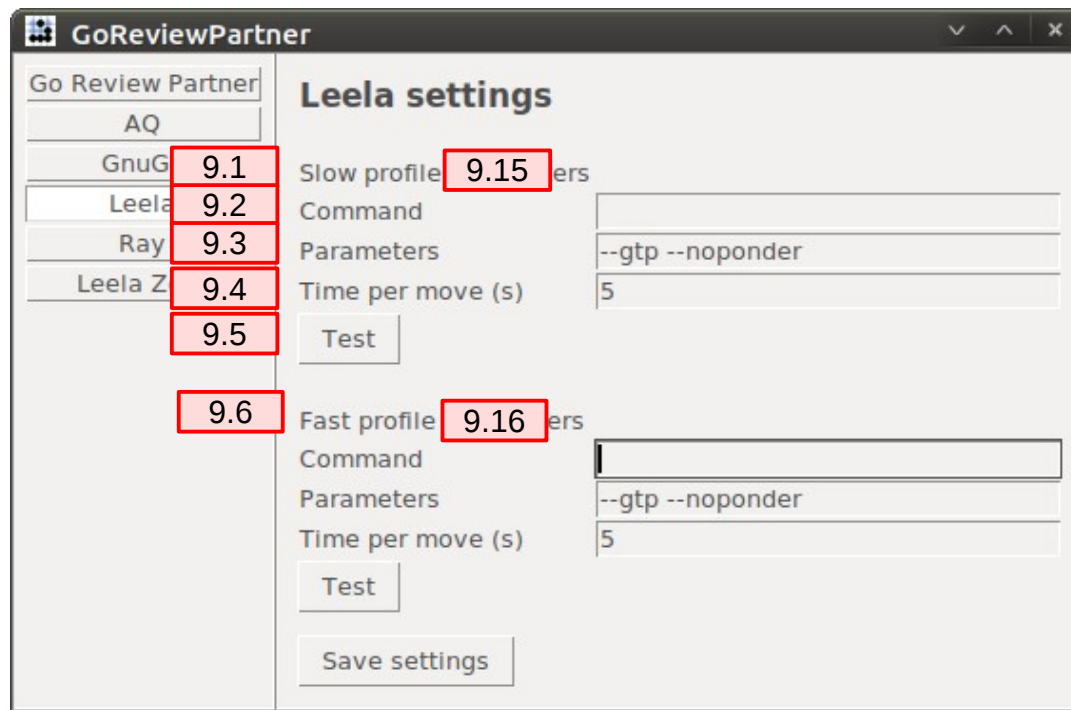




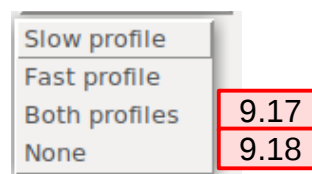








- 9.7
- 9.8
- 9.9
- 9.10
- 9.11



10.1  
10.2  
10.3  
10.4  
10.5  
10.6

10.7

10.8

10.9

10.10

10.11

10.12

10.13

GoReviewPartner

Move 21

Black to play, in the game, black played R4

For this position, Leela would play: Q8

Black win probability:

- before r4: 59.47%
- after r4: 56.43% (-3.04pp)

Black Value Network win probability:

- before r4: 64.51%
- after r4: 60.46% (-4.05pp)

Black Monte Carlo win probability:

- before r4: 50.40%
- after r4: 49.19% (-1.21pp)

Move	Win rate	Monte Carlo win rate	Value Network win rate	Policy Network value	Playouts
A r4	56.43%	49.19%	60.46%	20.6%	5859
A q8	59.47%	50.40%	64.51%	36.2%	8258
B r4	55.74%	51.72%	57.97%	24.8%	761

10.22  
10.23  
10.24  
10.25

Analysis by GoReviewPartner

Bot: Leela/0.11.0

Komi: 7.5

Intervals: moves 1-283 (both colors)

Command line: /home/pierre/Bureau/goreviewpartner/leela

Black: LizzieBot

White: Haylee

Move 1

Black to play, in the game, black played Q17

For this position, Leela would play: D3 (Book move)

10.26

10.14  
10.15  
10.16  
10.17  
10.18

black/white win probability for this variation: 51.26%/48.74%

Policy network value for this variation: 62.6%

Monte Carlo win probability for this variation: 48.15%/51.85%

Value network black/white win probability for this variation: 52.89%/47.11%

Number of playouts used to estimate this variation: 7278

Leela uses those, when  
goban size in not 19x19

Gnugo

10.19  
10.20  
10.21

black/white win probability for this variation: 42.76%/57.24%

Number of playouts used to estimate this variation: 4282

Evaluation for this variation: 124.7

RAVE(x%: y) for this variation: 43.46% 6072

Score estimation for this variation: %s

**GoReviewPartner**

11.1 Bot to use for analysis: Leela (Slow profile)

11.2 Black player: GnuGo (Fast profile)

11.3 White player: GnuGo (Fast profile)

11.4 No overlap thinking time ☐

11.5 Board size: 19

11.6 Komi: 7.5

11.7 Handicap stones: 3

11.8 SGF file name: 2018-04-22\_15-46\_GnuGo

Select colors to be analysed

- ☒ Black & white
- ☐ Black only
- ☐ White only

**GoReviewPartner**

Bot to use for analysis: Leela (Slow profile)

Black player: GnuGo (Fast profile)

White player: GnuGo (Fast profile)

11.9 Human

No overlap thinking time ☐

Bot used for analysis: Leela (Slow profile)

Leela (Slow profile)

Leela (Fast profile)

GnuGo (Fast profile)

LeelaZero (Slow profile)

LeelaZero (Fast profile)

Board size: 19

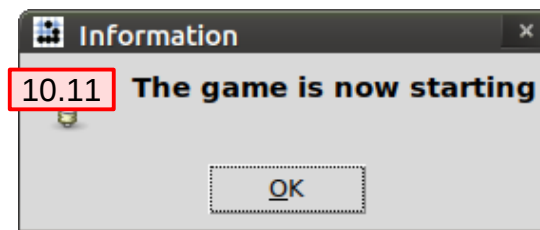
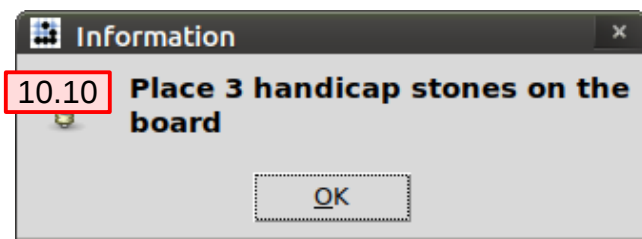
Komi: 7.5

Handicap stones: 3

SGF file name: 2018-04-22\_15-46\_GnuGo

Select colors to be analysed

- ☒ Black & white
- ☐ Black only
- ☐ White only



12.1

12.2

12.4

12.5

12.6

12.7

GoReviewPartner

Game

Black: GNU Go  
White: GNU Go  
Komi: 7.5  
Currently at move 6

Analysis

Analysis by GNU Go  
Status:  
Waiting for next move

Start the review

Live game +

Pause

12.3

12.11

A B C D E F

19  
18  
17  
16  
15  
14  
13  
12  
11  
10  
9  
8  
7  
6  
5  
4  
3  
2  
1

A B C D E F

GoReviewPartner

Game

Black: GNU Go  
White: GNU Go  
Komi: 7.5  
Currently at move 11

Analysis

Analysis by GNU Go  
Status:  
Waiting for next move

Start the review

Live game +

Resume

12.8

12.10

A B C D E F

19  
18  
17  
16  
15  
14  
13  
12  
11  
10  
9  
8  
7  
6  
5  
4  
3  
2  
1

A B C D E F

GoReviewPartner

Game

Black: Human player  
White: Human player  
Komi: 7.5  
Currently at move 1

Analysis

Analysis by GNU Go  
Status:  
Waiting for next move

Start the review

Live game +

Pass

Undo

12.14

12.9

12.12

12.13

A B C D E F G H J K L

19  
18  
17  
16  
15  
14  
13  
12  
11  
10  
9  
8  
7  
6  
5  
4  
3  
2  
1

A B C D E F G H J K L